

For more complete information on XCMG products, dealer services, and industry solutions, visit us on the web at www.xcmg.com

1st Jan 2014 XCMG
All Rights Reserved

Materials and specifications are subject to change without notice.
Featured machines in photos may include additional equipment.
See your XCMG dealer for available options.

XCMG, WWW.XCMG.COM, their respective logos, "XCMG For Your Success" and the POWER EDGE trade dress, as well as corporate and product identity used herein, are trademarks of XCMG and may not be used without permission.



KUZHOU CONSTRUCTION MACHINERY GROUP IMP. & EXP.CO.,LTD



XCMG For Your Success

Operating Weight	81057lb (36800kg)
Bucket Capacity	1.8~2.3yd ³ (1.4~1.8m ³)
Max. Digging Radius	422.4in(10720mm)
Engine Model	QSK38-C260
Rated Engine Power	258/2200hp/rpm(194/2200KW/rpm)

XE360U

HYDRAULIC EXCAVATOR

Product Profile

XE360U uses an imported Cummins engine and meets Tier 3 emission standards, making it environmentally friendly. Its hydraulic components come from renowned international brands, ensuring their quality. In addition, this product features easy maintenance and caters to the operating habits of users in North America.

Product Highlights

■ High-End Configuration and Excellent Performance

- The original, imported new generation Cummins engine is environment-friendly and features large power output, low fuel consumption, reliable performance, and low emissions. It is built in full compliance with the North American Tier 3 emissions regulation and noise standards.
- The globally advanced, established, and reliable negative flow control system uses dual-pump converging and multi-way valve distribution with greater fuel flow to the cylinders. This provides the machine with powerful digging force and high operating efficiency. The system features low fuel consumption, cooler operation, and high efficiency.
- The new generation electronic control system is smart, safe, and environment-friendly. It strikes a good balance between power and hydraulic load. The smart electronic control system allows remote control and the newly added memory ability keeps track of all operations. The power conversion device maximizes power usage effectiveness.



■ Superb Driving Experience

- The large-size cab with its deluxe furnishings, superb design, and thoughtful details fully upgrade ride comfort and total operation experience.
- SEAT: The advanced operator assistance system features an ergonomic design. Its hydraulic shock absorber, multi-directional and multi-level adjustment, and unique lumbar support provide greater ride comfort and effectively alleviate the operator's working fatigue.
- The large-screen color LCD display digitally follows machine information in a visually pleasing display, making the human-machine interface friendlier.



■ High Strength, Efficiency, and Durability

(Body: 5-point song font for Chinese characters, 5-point Calibri font for letters and numbers)

- The structural parts are built with special craftsmanship of imported high-strength and wear-resistant steel, greatly enhancing the strength and durability of products and enabling them to easily deal with various adverse working conditions.
- Sturdy and durable equipment, such as the heavy-duty reinforced boom, arm, and bucket, maintains great digging force, even under extremely harsh conditions.
- It comes standard with an extra-long and extra-wide heavy-duty chassis. The optimized box structure increases strength and lowers the center of gravity for better stability.

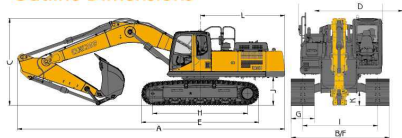


■ Easy Maintenance and Service

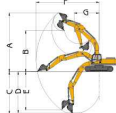
- The color LCD display is reliable and pleasing to the eye and follows all operation parameters. Maintenance reminders make use carefree.
- The gear oil reservoir has an embedded sealing strip, making dust, sand, water, oil, and other foreign particles difficult to enter. This makes the reservoir dustproof and waterproof and minimizes maintenance.
- The equipment lubrication points adopt a centralized lubrication arrangement, making lubrication an easier job.



Outline Dimensions



Operating Scope



Technical Specifications

Operating Weight	36800kg	81057lb	
Bucket Capacity	1.4 - 1.8m ³	57.0 yd ³	
Engine	Engine Model	Q5C8.3-C260	Q5C8.3-C260
	Engine Output	194/2200kw(hp)	258.0 hp/rpm
	Max. Torque/Speed	1180/1500N·m	869.0 lb·ft
	Displacement	8.3L	2.2 gal
	Travel Speed	5.4/3.2km	3.4/2.0mph
Key Performance	Swing Speed	9.6r	9.6r/min
	Gradeability	70%	
	Ground Pressure	66.7kPa	9.7 psi
	Bucket Digging Force	263kN	59176.0 lb
	Arm Digging Force	225kN	50625.0 lb
	Max. Traction	285kN	64125.0 lb
	Rated Flow of Main Pump	2×300L (gal)	2×79gal/min
	Max. Pressure of Main Relief Valve	34.3/37Mpa	4978 / 5370psi
	Max. Pressure of of Travel System	34.3MPa	4978.0psi
	Max. Pressure of Swing System	26.5MPa	3846.0psi
Max. Pressure of Pilot System	3.9MPa	566.0psi	
Oil Capacity	Fuel Tank Capacity	660L	174.4gal
	Hydraulic Tank Capacity	350L	92.5gal
	Engine Oil Capacity	28L	7.4gal
Outline Dimension	A. Overall Length	11386mm	448.6in
	B. Overall Width	3390mm	133.6in
	C. Overall Height	3710mm	146.2in
	D. Overall Width of Upperstructure	3181mm	125.3in
	E. Crawler Length	5035mm	198.4in
	F. Overall Width of Undercarriage	3390mm	133.6in
	G. Crawler Width	800mm	31.5in
	H. Crawler Wheelbase	4040mm	159.2in
	I. Crawler Gauge	2590mm	102.0in
	J. Cleaned Under Counterweight	1197mm	47.2in
Operating Scope	K. Min. Ground Clearance	500mm	19.7in
	L. Min. Tail Swing Radius	3570mm	140.7in
	M. Crawler Height	1015mm	40.0in
	A. Max. Digging Height	10379mm	408.9in
	B. Max. Dumping Height	7153mm	281.8in
	C. Max. Digging Depth	6893mm	271.6in
	D. 8-ft Horizontal Digging Depth	6709mm	264.3in
	E. Max. Vertical Wall Digging Depth	6461mm	254.6in
	F. Max. Digging Radius	10720mm	422.4in
	G. Min. Swing Radius	4510mm	177.7in
H. Max. Dozer Blade Lifting Height	10473mm	412.6in	
Standard Configuration	Boom Length	6400mm	252.2in
	Arm Length	2670mm	105.2in
	Bucket Capacity	1.6m ³	2.1yd ³