

## Product Profile

The QUY80U crawler crane is developed with the North American market in mind on the basis of our company's many years of crawler crane manufacturing experience. The product has passed the North American certification. It provides superior lifting performance and optimum safety, and it features loaded travel, 360° full swing operations, and retractable crawlers. The boom length is 42' 8" - 190' 3" and the fixed jib length is 29' 6" - 50'.

## Product Highlights

### Optimum Lifting Performance

- 1) Max. Lifting Torque = 300JSt.m;
- 2) The boom lifting performance is well above that of crawler cranes of the same grade. Engine (200hp), which complies with the most stringent emission standard in the world.

### Environment-friendly

- 1) Stringent Emission Standard  
QUY80U is equipped with the Cummins QSL9-Tier 4F engine (200hp), which complies with the most stringent emission standard in the world.
- 2) Low Noise Level  
The product, as measured in accordance with Appendix G of EN13000 and 2000/14EC, registers a sound pressure level of 74.2dB (A) and a sound power level of 105dB (A) in the cab, with a measurement error of 3dB(A).



Engine

### High Efficiency

- 1) The primary and secondary hoist winches are designed with the gravity hook-lowering feature.
- 2) The boom-end single pulley mechanism allows fast lifting of light loads.



Primary and Secondary Hoist Winches with Gravity Hook-Lowering Feature



Single Pulley Mechanism

### Highly Reliable Components

- 1) Its transport weight with crawler beams is not more than 90,000 lb (40.5 mt), and
- 2) Its heaviest assembly is 9,700 lb (4.4 mt), making installation and transport extremely easy.

### Complete Safety Protection Measures

Its safety protection measures include torque limiting, holding monitoring, hook height limiting, boom retracted lifting protection, and emergency stop button.



Monitor



Electrical Control System Components

### Excellent Serviceability

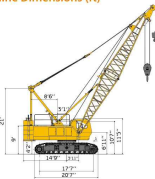
- 1) The centralized lubrication system simplifies routine maintenance;
- 2) The centralized pressure measuring devices newly added to the hydraulic system are located near crawler beams, where the pressures related to all operational functions are collectively measured.



### It features small transport weight and lightweight assemblies.

- 1) Its transport weight with crawler beams is not more than 90,000 lb (40.5 mt), and
- 2) Its heaviest assembly is 9,700 lb (4.4 mt), making installation and transport extremely easy.

## Outline Dimensions (ft)



A-truss (Covers the boom, A-truss and lifting pulley block)

## Technical Specifications

Dimensions (in Transport)	Overall Length	281	8.4m
	Overall Width	115	3.43m
	Overall Height	11.58	3.5m
Weight Specifications	Max. Allowable Weight (in transport)	90000lb	40.8t
	Curb Weight	161000lb	73t
	Engine Model	QSL9-T4(F)	
Power Specifications	Rated Engine Power	200hp	146kW
	Rated Engine Torque	799(1400) - 8.1 (min)	1053(1400) r/min
	Emission Standard	U.S. EPA Tier 4F	
Travel Specifications	Max. Travel Speed	1200mph	1200mph
	Min. Turning Radius	28ft	8m
	Min. Ground Clearance	1.4ft	400mm
Performance Specifications	Max. Gradeability	30%	30%
	Max. Rated Lifting Capacity	80t/m	72.6t
	Min. Rated Working Radius	13ft	4.3m
	Max. Lifting Torque	2362000lb-ft	3071m
	Basic Boom Length	42.8ft	13m
	Fully Extended Boom Length	190ft	58m
Working Speed Specifications	Fully Extended Boom + Jib Length	220ft	67m
	Jib Mounting Angle	10°/30°	
	Boom Lifting Lifting Time	150s	
	Max. Swing Speed	2/min	7.94
Max. Speed of Main Lifting Mechanism (Single Line)	384 ft/min	120m/min	
	390 ft/min	120m/min	

Jib Length (ft)	190' 3"		170' 0"		150' 0"		130' 0"		110' 0"		90' 0"		70' 0"		50' 0"	
	42' 8"	50'	42' 8"	50'	42' 8"	50'	42' 8"	50'	42' 8"	50'	42' 8"	50'	42' 8"	50'	42' 8"	50'
190' 3"	142.22	141.96	132.21	131.95	122.20	121.94	112.20	111.94	102.20	101.94	92.20	91.94	82.20	81.94	72.20	71.94
170' 0"	116.46	116.19	106.45	106.18	96.44	96.17	86.43	86.16	76.42	76.15	66.41	66.14	56.40	56.13	46.39	46.12
150' 0"	102.1	101.83	92.09	91.82	82.08	81.81	72.07	71.80	62.06	61.79	52.05	51.78	42.04	41.77	32.02	31.75
130' 0"	91.62	91.35	81.58	81.31	71.54	71.27	61.50	61.23	51.46	51.19	41.42	41.15	31.38	31.11	21.34	21.07
110' 0"	82.03	81.76	72.26	71.99	62.22	61.95	52.21	51.94	42.20	41.93	32.19	31.92	22.18	21.91	12.17	11.90
90' 0"	73.03	72.76	63.26	62.99	53.22	52.95	43.21	42.94	33.20	32.93	23.19	22.92	13.17	12.90	7.94	7.67
70' 0"	65.02	64.75	55.25	54.98	45.21	44.94	35.20	34.93	25.19	24.92	15.17	14.90	9.94	9.67	4.98	4.71
50' 0"	58.02	57.75	48.25	47.98	38.21	37.94	28.20	27.93	18.17	17.90	12.94	12.67	7.98	7.71	2.99	2.72
42' 8"	51.02	50.75	41.25	40.98	31.21	30.94	21.20	20.93	11.17	10.90	6.94	6.67	1.99	1.72	0.99	0.72
35' 0"	44.02	43.75	34.25	33.98	24.21	23.94	14.20	13.93	4.17	3.90	0.94	0.67	0.99	0.72	0.99	0.72
28' 0"	37.02	36.75	27.25	26.98	17.21	16.94	7.20	6.93	0.17	0.90	0.94	0.67	0.99	0.72	0.99	0.72
21' 0"	30.02	29.75	20.25	19.98	10.21	9.94	0.20	0.93	0.94	0.67	0.99	0.72	0.99	0.72	0.99	0.72
14' 0"	23.02	22.75	13.25	12.98	3.21	2.94	0.23	0.96	0.94	0.67	0.99	0.72	0.99	0.72	0.99	0.72
7' 0"	16.02	15.75	6.25	5.98	0.24	0.97	0.94	0.67	0.99	0.72	0.99	0.72	0.99	0.72	0.99	0.72
0'	9.02	8.75	0.25	0.98	0.94	0.67	0.99	0.72	0.99	0.72	0.99	0.72	0.99	0.72	0.99	0.72

## Lifting Load Tables

### Fixed Jib Lifting Performance Table

Name										
Boom Length		49'(14.97')					52'(15.87')			
Jib Length		8'(2.44')		13.3'(4.03')		18'(5.49')		8'(2.44')		13.3'(4.03')
Radius(R) (ft.)		Mounting Angle (°)								
		10	20	30	40	50	60	70	80	90
15 (4.57' )		14.34		14.34						13.24
16 (5.2' )		14.34	14.34	14.34						13.24 12.12 12.12
17 (5.15' )		14.34	14.34	14.34						13.24 12.12 12.12
18 (5.5' )		14.34	14.34	14.34			8.92			13.24 12.12 12.12
19 (6.2' )		14.34	14.34	14.34		11.62	8.92			13.24 12.12 12.12 11.02
20 (6.5' )		14.34	14.34	14.34		11.62	8.92			13.24 12.12 12.12 11.02
22 (7.2' )		14.34	14.34	14.34		11.62	8.92	7.72		13.24 12.12 12.12 11.02
24 (7.6' )		13.24	13.24	13.24		11.62	8.92	7.72	12.12	12.12 12.12 11.02
25 (8.5' )		11.46	11.46	11.46		11.62	8.92	7.72	11.02	11.02 11.02 11.02
28 (8.1' )	10.14	10.14	10.14	10.14		10.14	8.92	7.72	9.92	9.92 9.92 8.7
30 (9.1' )	9.04	9.04	9.04	9.04		9.04	8.92	7.72	8.92	8.92 8.92 8.8
32 (10.5' )	7.84	7.84	7.84	7.84		7.84	7.72	7.72	7.72	7.72 7.72 7.72
34 (11.1' )	7.06	7.06	7.06	7.06		7.06	6.4	6.62	6.62	6.62 6.4
35 (11.8' )	6.4	6.4	6.4	6.4		6.4	5.74	5.74	5.74	5.5 5.5 5.3
38 (12.4' )			6.74	6.74	6.74		6.3			4.86 4.86 4.86
40 (13.1' )				5.3	5.3		4.86			
42 (13.7' )							4.42			
43 (14.1' )							3.86			
Ratio		1	1	1	1	1	1	1	1	1
Hook (T/D)		9	9	9	9	9	9	9	9	9
Wind Speed (m/s)		0.8	0.8	0.8	0.8	0.8	0.8	0.8	0.8	0.8

#### ■ Instructions on how to use the lifting performance table(s)

- The rated lifting capacity in the table refers to the max. lifting capacity that can be ensured with the given boom length and radius on a solid and flat surface (that does not subside during 360° lifting operation) and has a gradient of not more than 1 per cent. The lifting capacity value in gray shade depends on the crane strength, and the other values depend on the crane stability. Never exceed those lifting capacity values during operations. The unit of the rated lifting capacity is lb x 1,000.
- The rated lifting capacity in the table includes the weight of hook and lifting appliance.
- The blank cells in the table, where no rated value is given, indicate that the crane shall not be used under corresponding conditions.
- The max. lifting capacity (including the hook, lifting appliances, and steel wire rope) of the boom-and single pulley mechanism shall never exceed 17 lb x 1,000. When the rated lifting capacity in the performance table is less than 17lb x 1,000, the lifting operations shall be conducted in accordance with the performance table.
- The crane shall operate in conditions when the wind speed is not more than 10m/s (in force 5 gale).
- There are four types of hooks, i.e. 90 USL, 55 USL, 30 USL, and 9 USL hooks, of which the 9 USL hook is for working conditions when the fixed jib and the boom-and single pulley are used. The weights of different hooks are shown in the table below.

#### Weight of different tonnage hooks

Hook	90 USL Hook	30 USL Hook	9 USL Hook
Weight:	0.96 USL	0.48 USL	0.29 USL

- The ratios in the lifting performance table correspond to the max. lifting capacity at the given boom strength, and ratios and hooks shall be selected according to actual lifting load in the table.

For more complete information on XCMG products, dealer services, and industry solutions, visit us on the web at [www.xcmg.com](http://www.xcmg.com)

1" Jan 2014 XCMG  
All Rights Reserved

Materials and specifications are subject to change without notice. Featured machines in photos may include additional equipment. See your XCMG dealer for available options.

XCMG, WWW.XCMG.COM, their respective logos, "XCMG For Your Success" and the POWER EDGE trade dress, as well as corporate and product identity used herein, are trademarks of XCMG and may not be used without permission.



KUZHOU CONSTRUCTION MACHINERY GROUP IMP. & EXP.CO.,LTD



XCMG For Your Success

Max. Rated Lifting Capacity 800t(172.80)  
Max. Lifting Torque 23620000lb. ft(31971.m)  
Max. Allow Weight(in transport) 90000(40.8)  
Engine Model QSL9-TAUF  
Rated Engine Power 3653hp(1986kw)

# QY80U

CRAWLER CRANE